

SCHAKELINGEN MET DE ELECTRONIC ENGINEER EE 1003

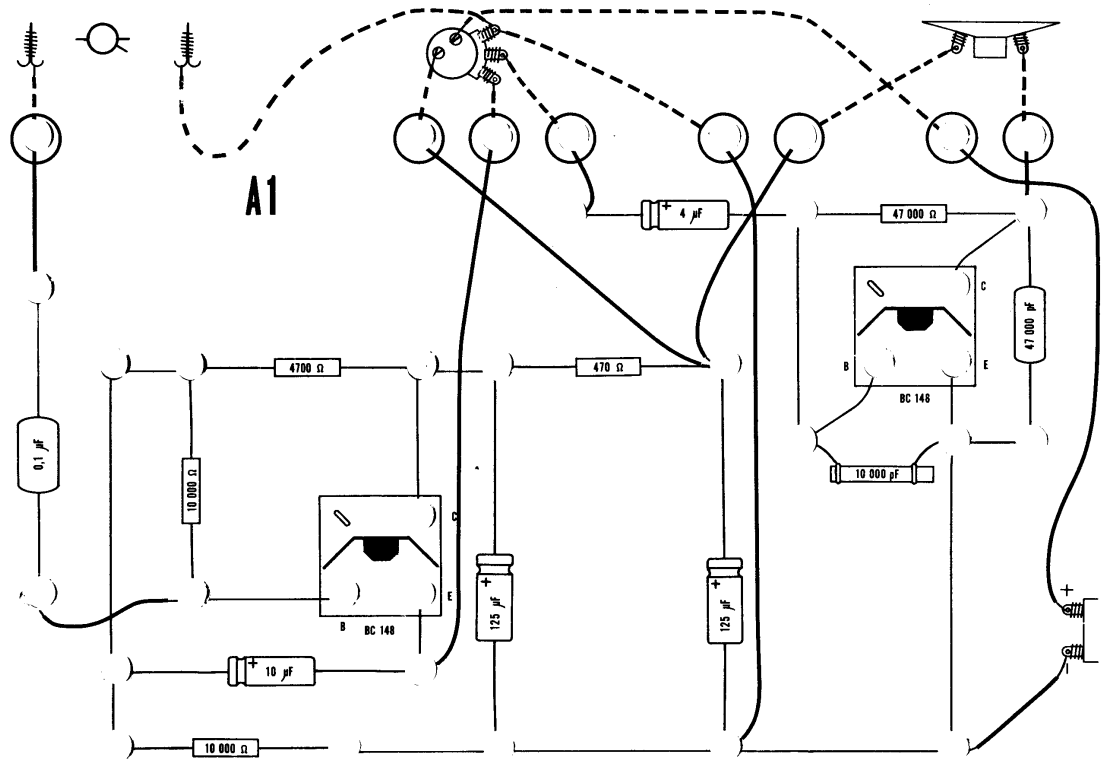
- A1 TWEE-TRAPSVERSTERKER
- A2 PUSH-PULL VERSTERKER
- A3 DRIE-TRAPSVERSTERKER MET TEGENKOPPELING

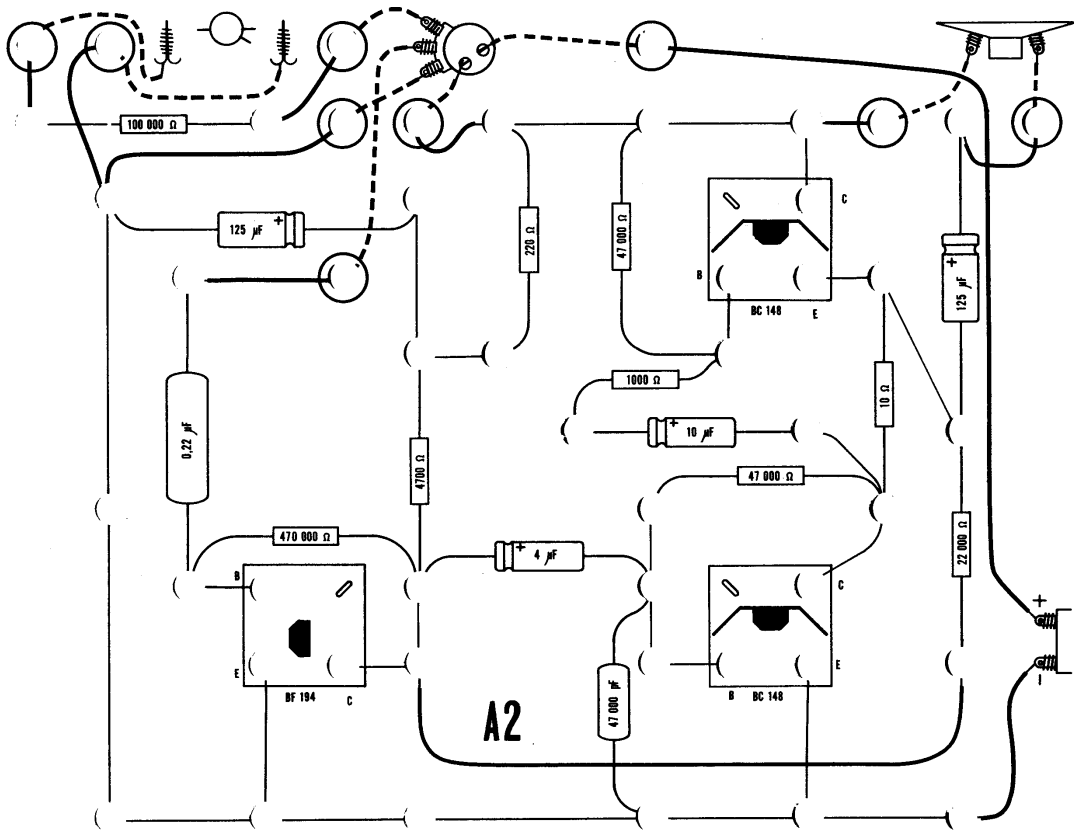
- B1 MORSECODETRAINER
- B2 TELEFOONMEELUISTERVERSTERKER
- B3 GENERATOR VOOR TELEFOONSIGNALLEN

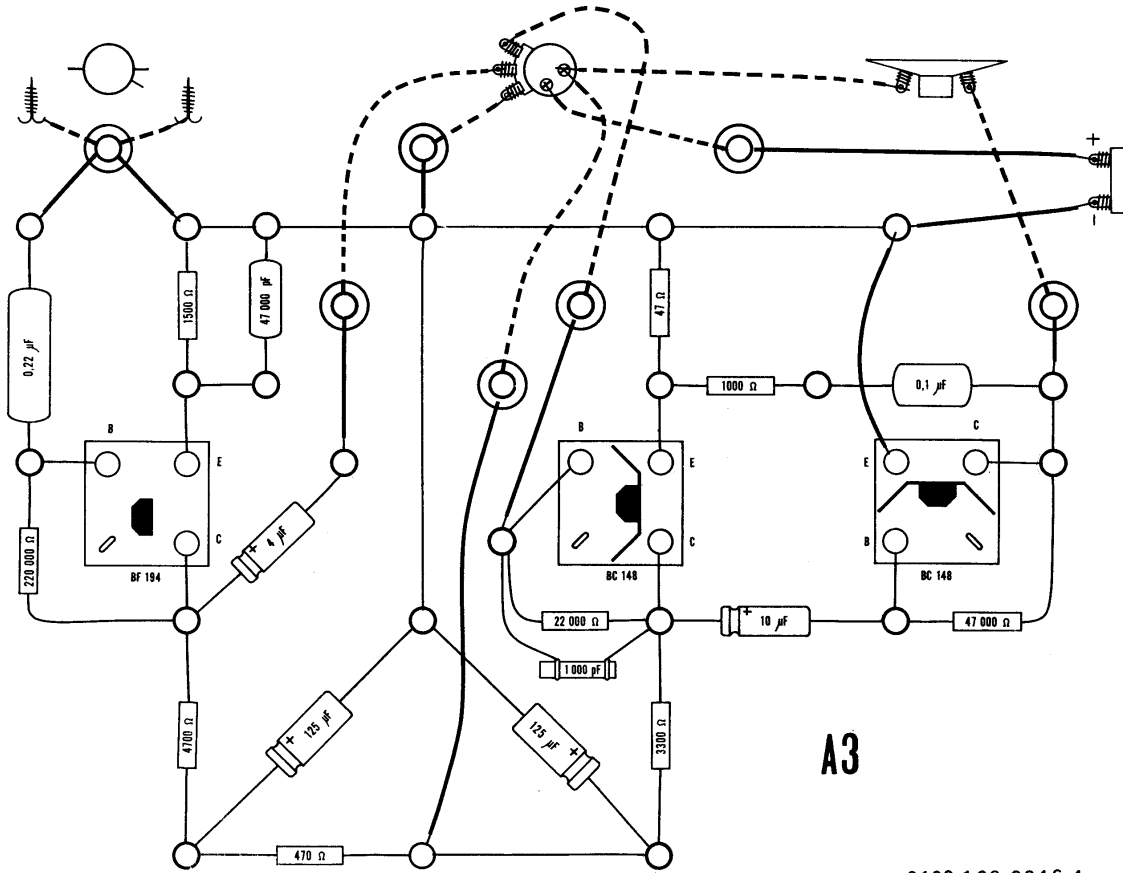
- C1 DRIE-TRANSISTOR MG-REFLEXONTVANGER
- C2 SUPERREGENERATIEVE ONTVANGER

- D1 VERKLIKKERLICHT
- D2 KNIPPERLICHT MET INSTELBAAR TEMPO
- D3 FLITSLICHT MET INSTELBAAR TEMPO
- D4 AKOESTISCH RELAIS
- D5 DIEFSTALALARM MET LICHTCEL EN RAAMKONTAKT
- D6 INBRAAKALARM
- D7 TWEE-TRANSISTOR CLIGNOTEUR
- D8 DRIE-TRANSISTOR CLIGNOTEUR
- D9 TWEE-TONIGE CLAXON

- E1 AUTOMATISCHE NACHTLAMP
- E2 VOCHTIGHEIDSINDICATOR MET INDICATIELAMP
- E3 VOCHTIGHEIDSINDICATOR MET GELUIDSSIGNAAL
- E4 TIJDSCHAKELAAR MET INDICATIELAMP
- E5 TIJDSCHAKELAAR MET GELUIDSSIGNAAL
- E6 LICHTINTENSITEITSMETER
- E7 MEETBRUG VOOR WEERSTANDEN, SPOELN EN CONDENSATOREN

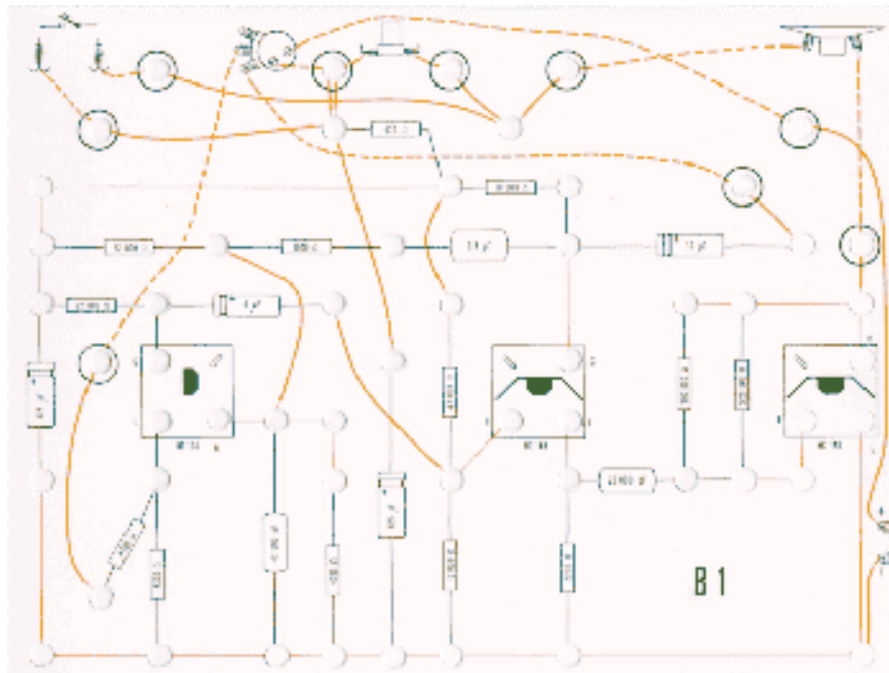
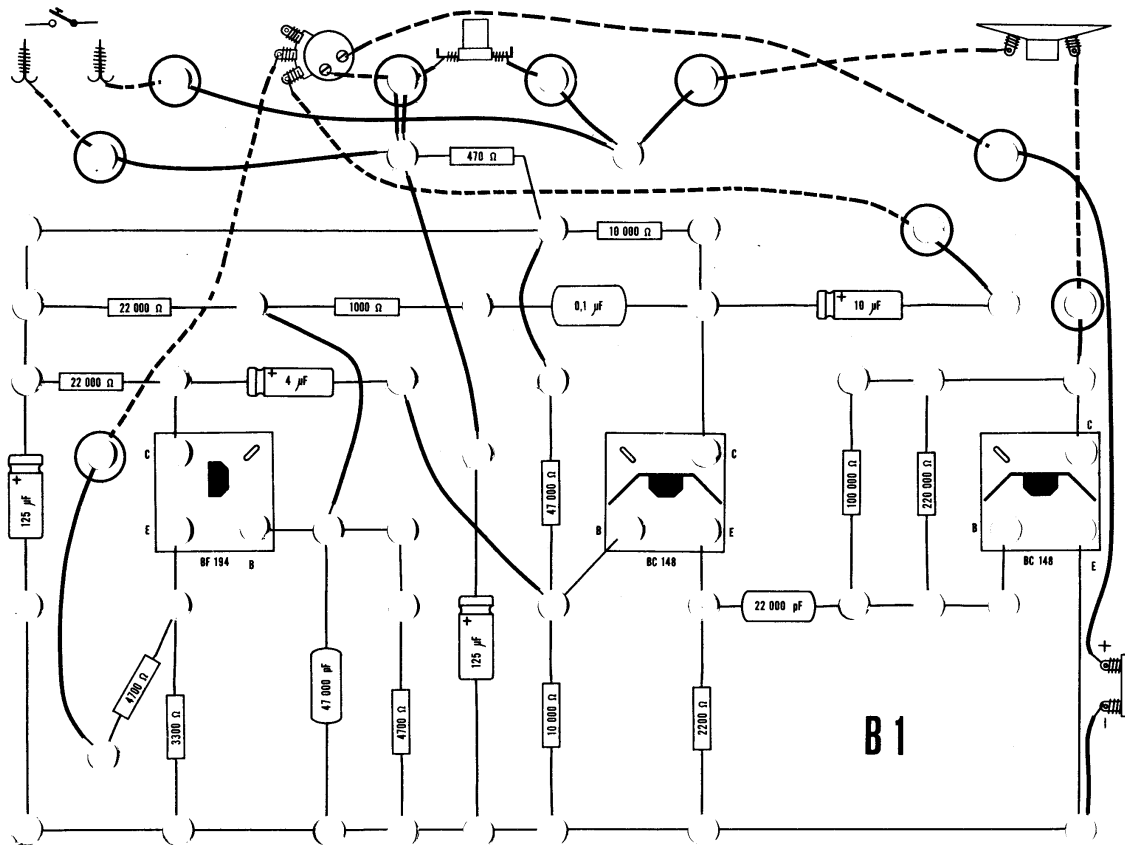


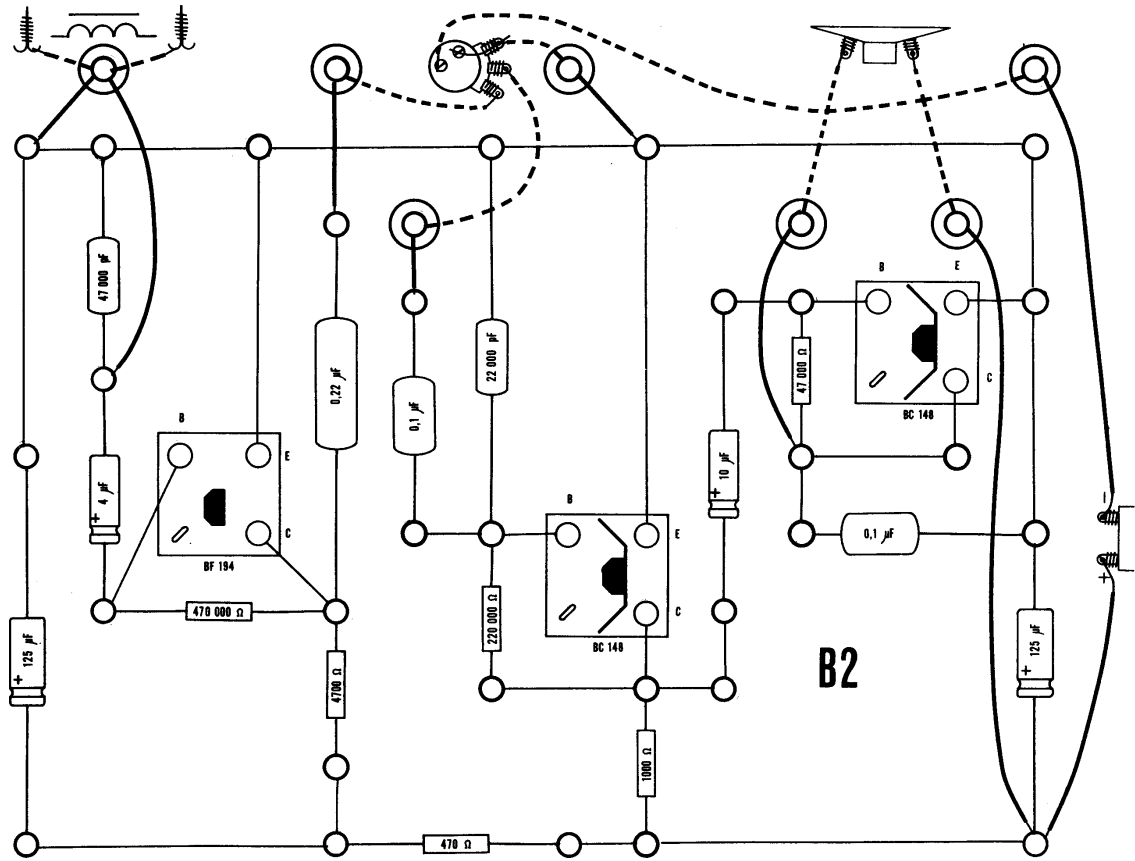


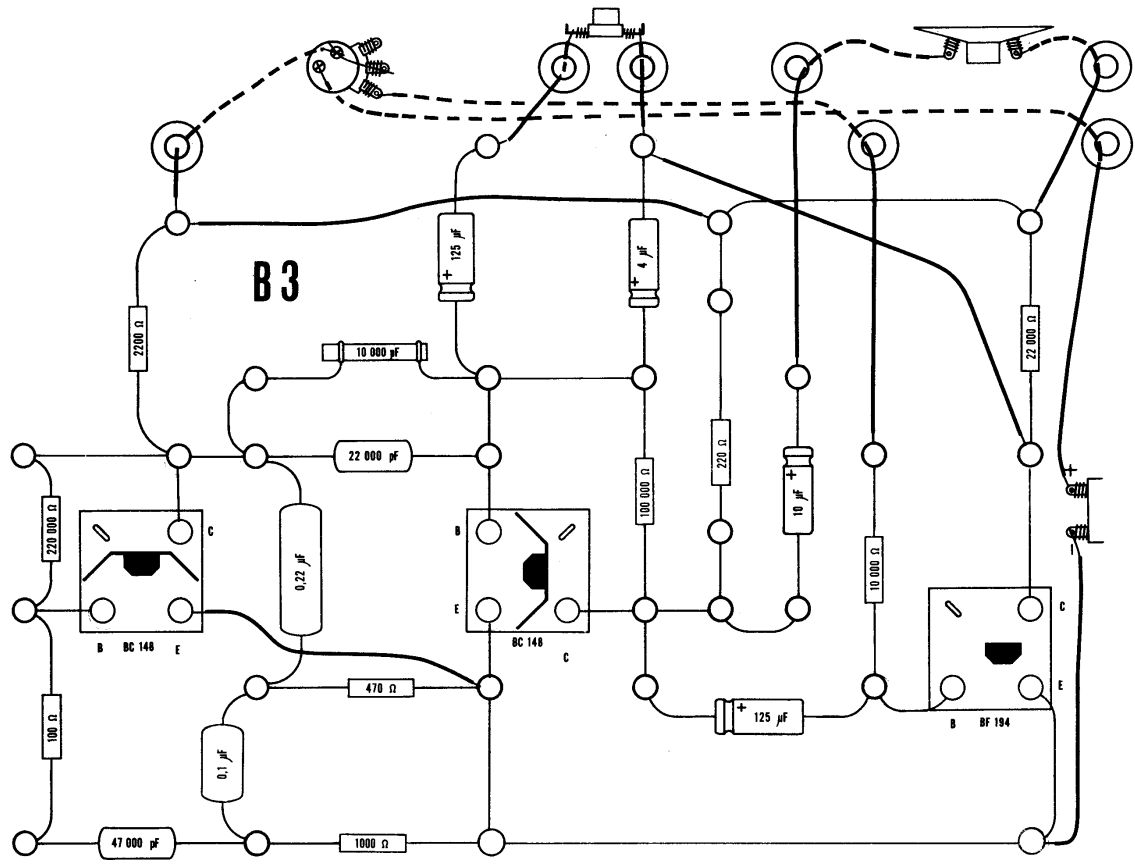


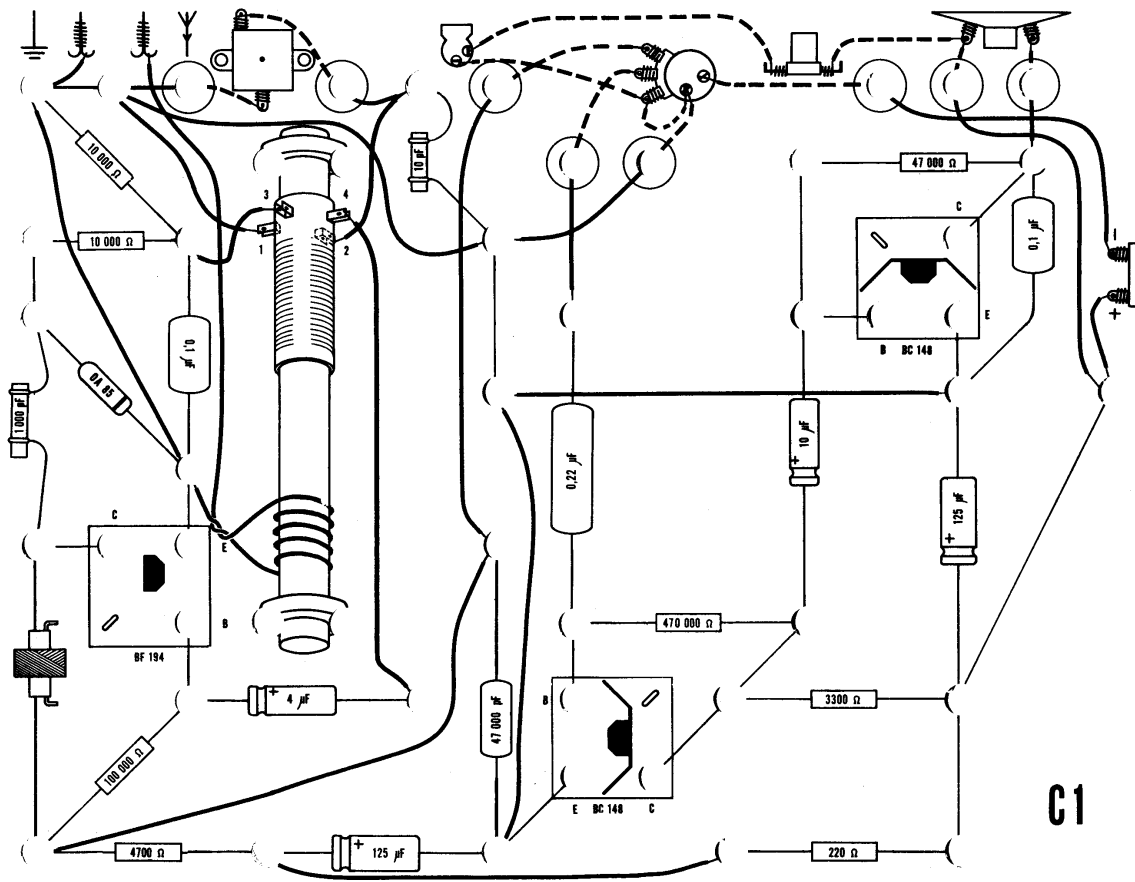
A3

3122 106 0046.4

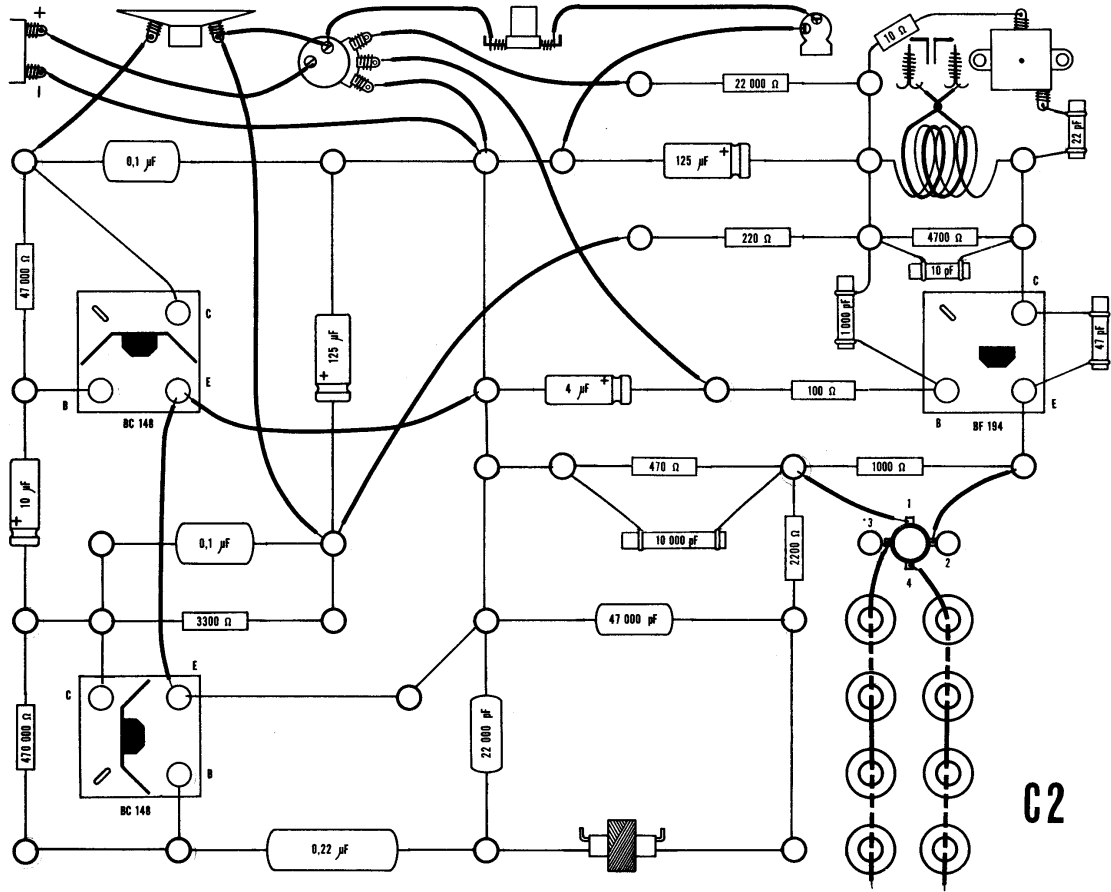


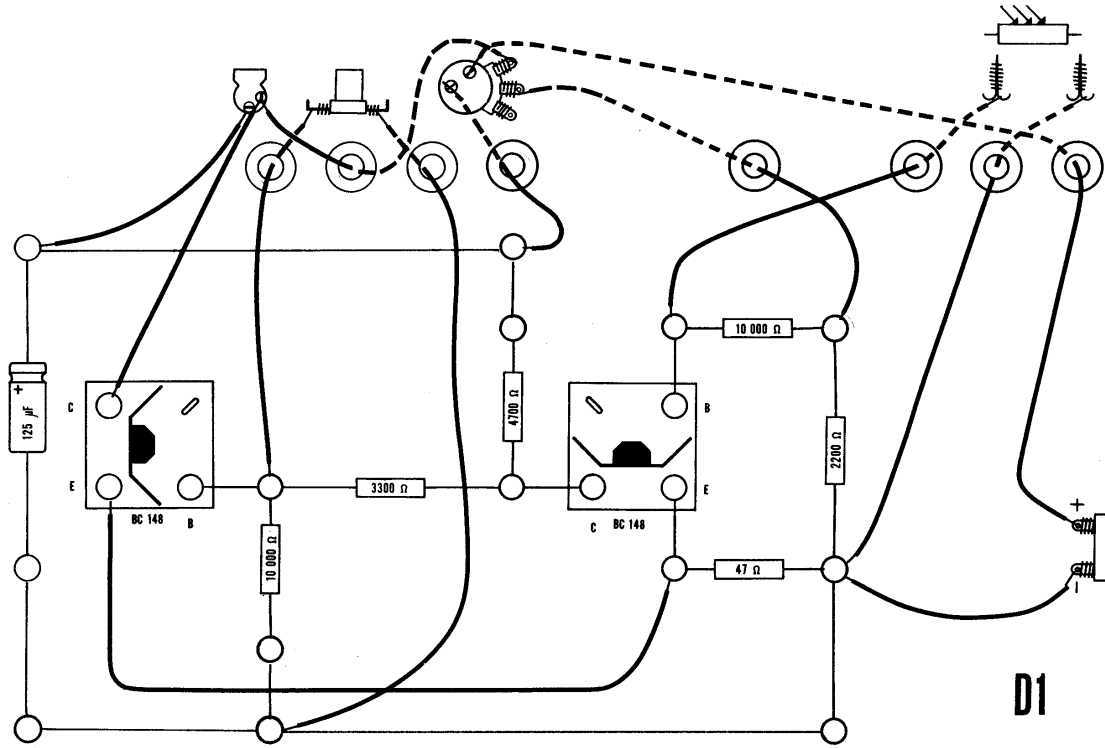


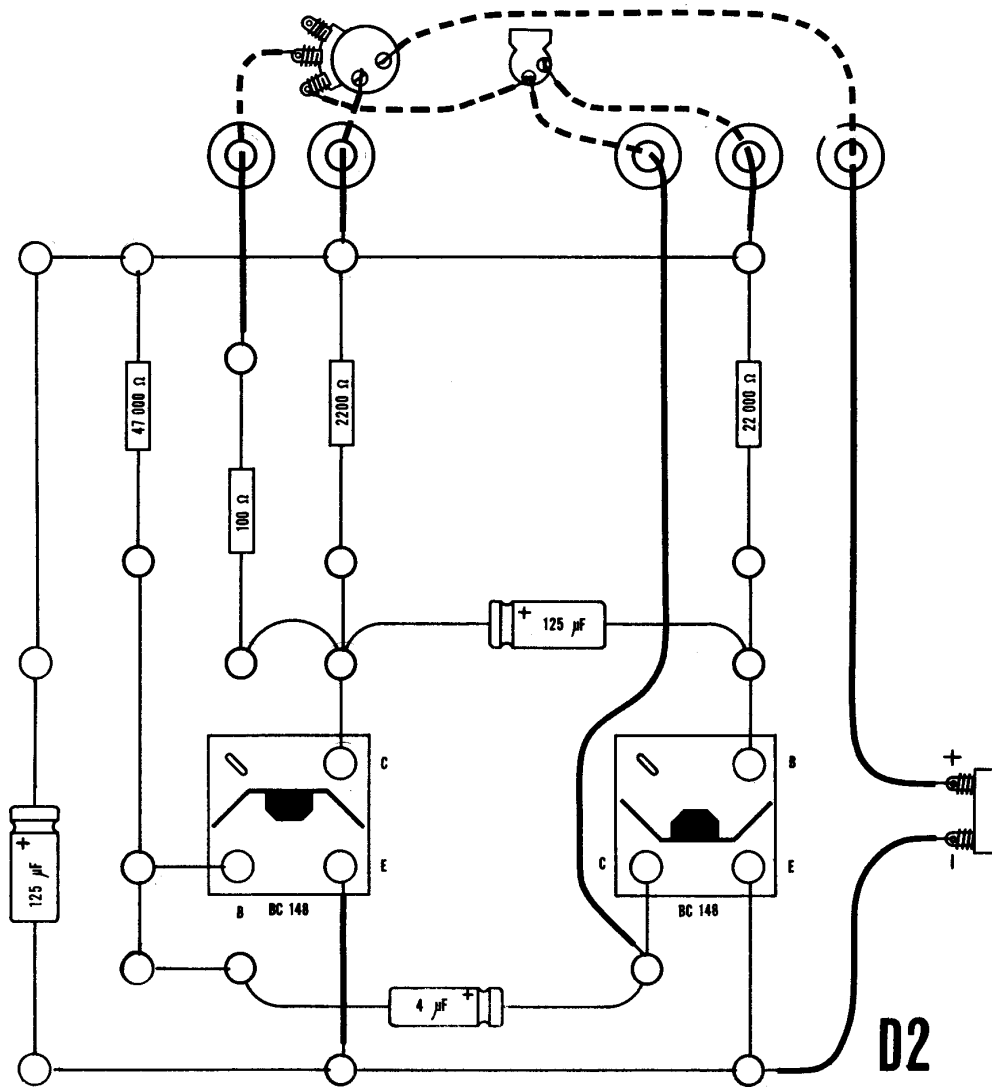


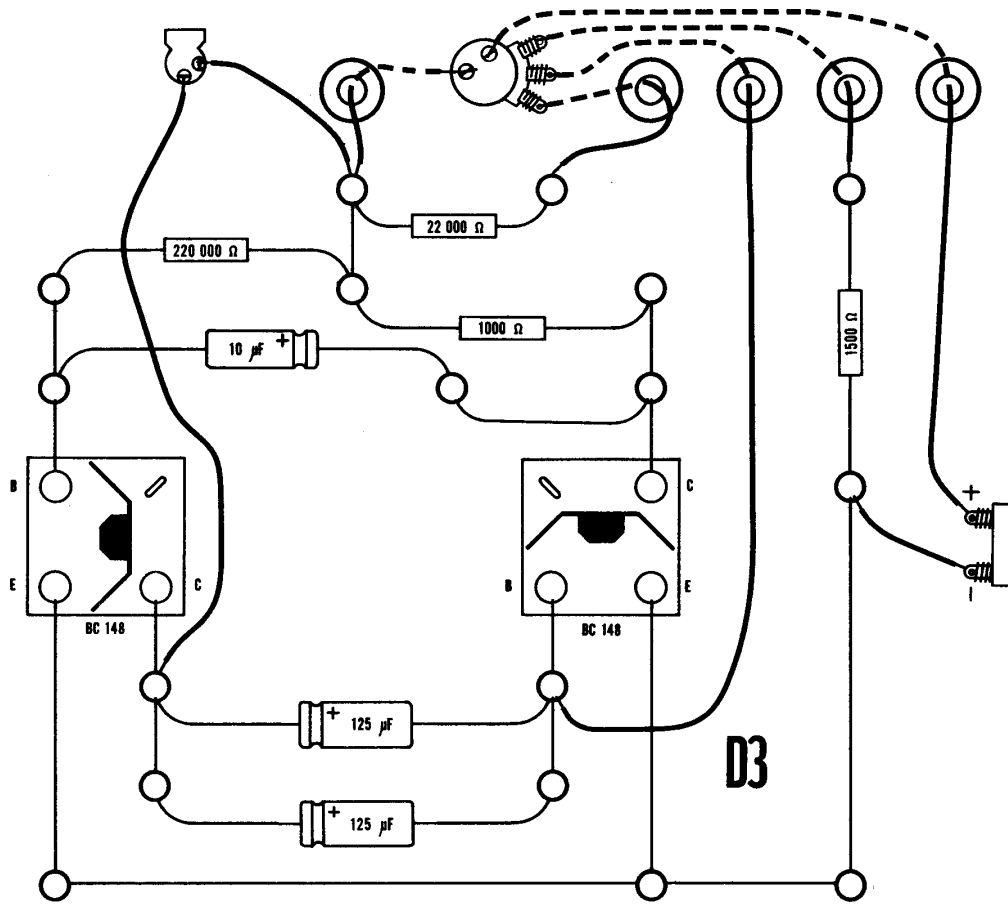


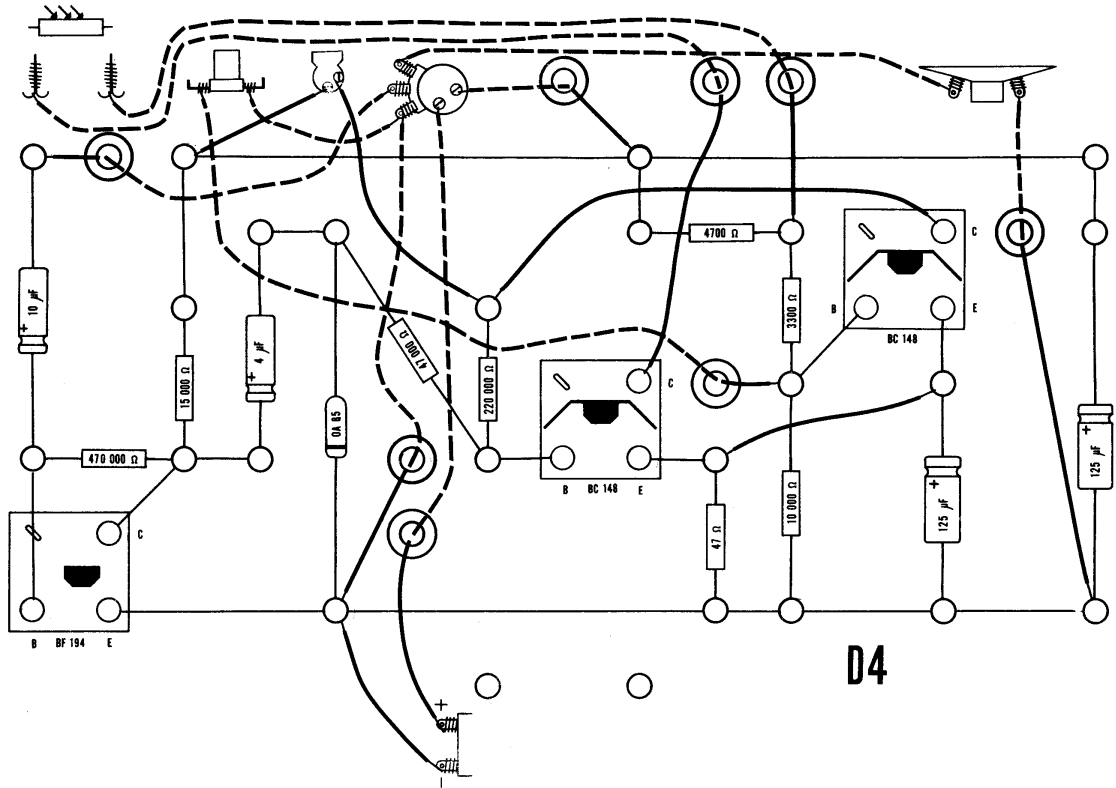
C1

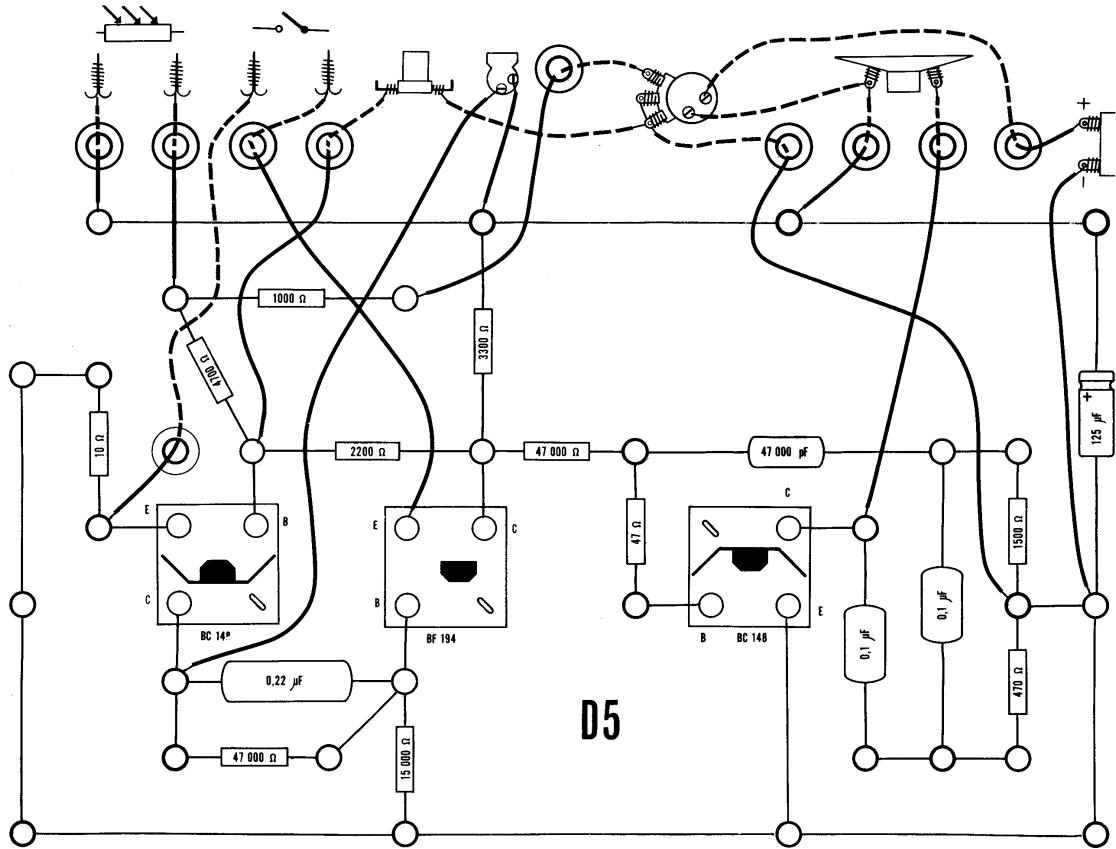


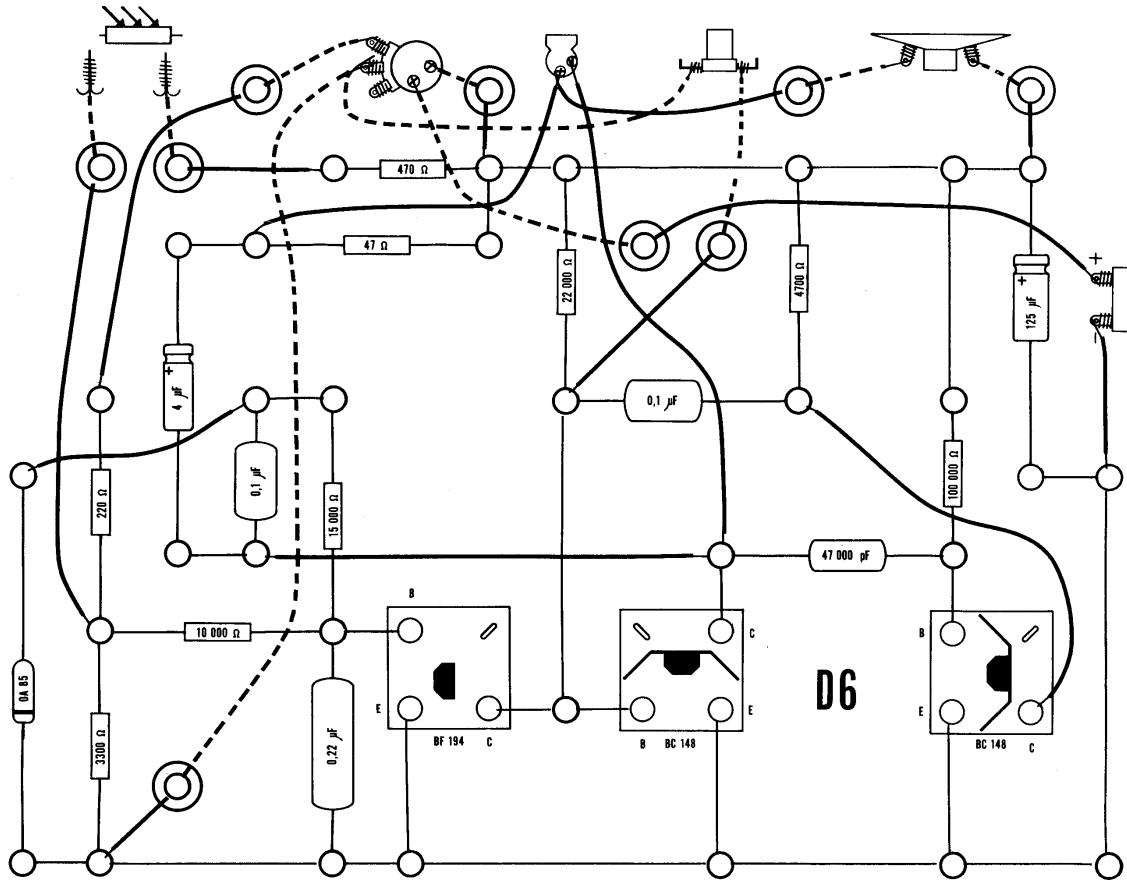


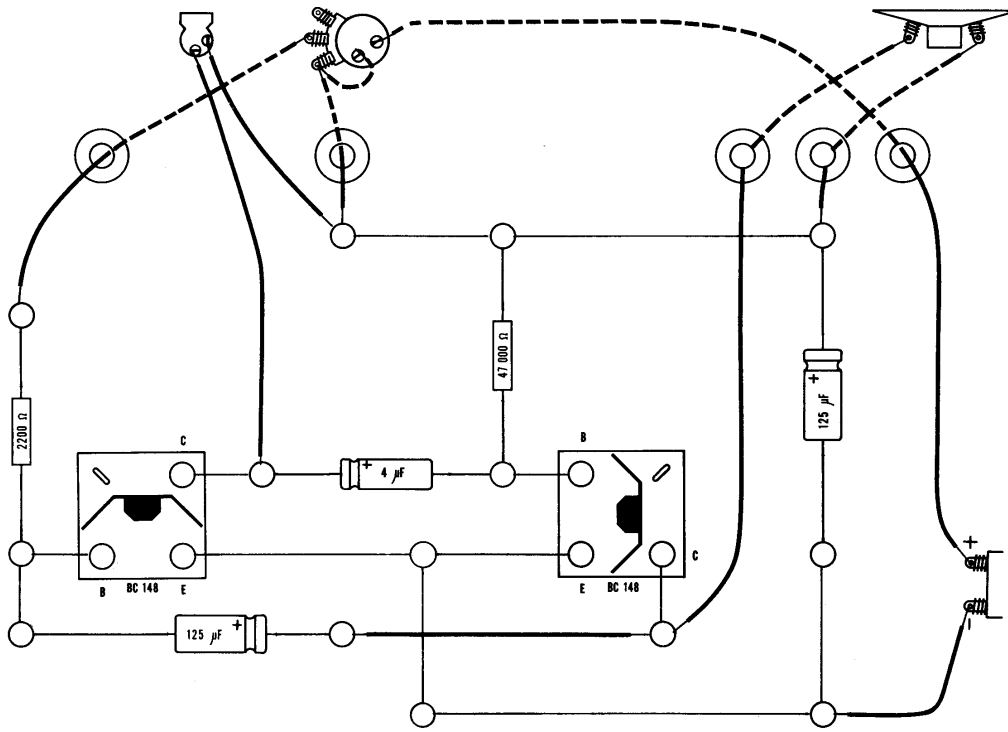




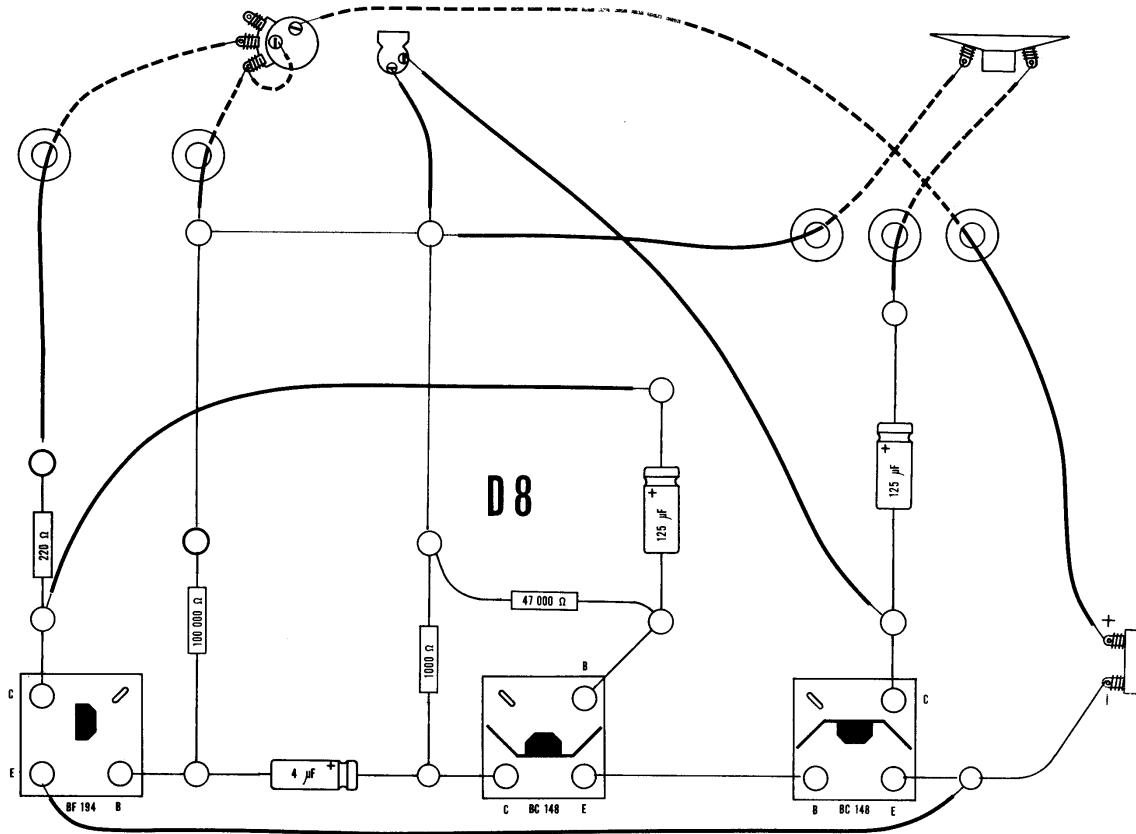


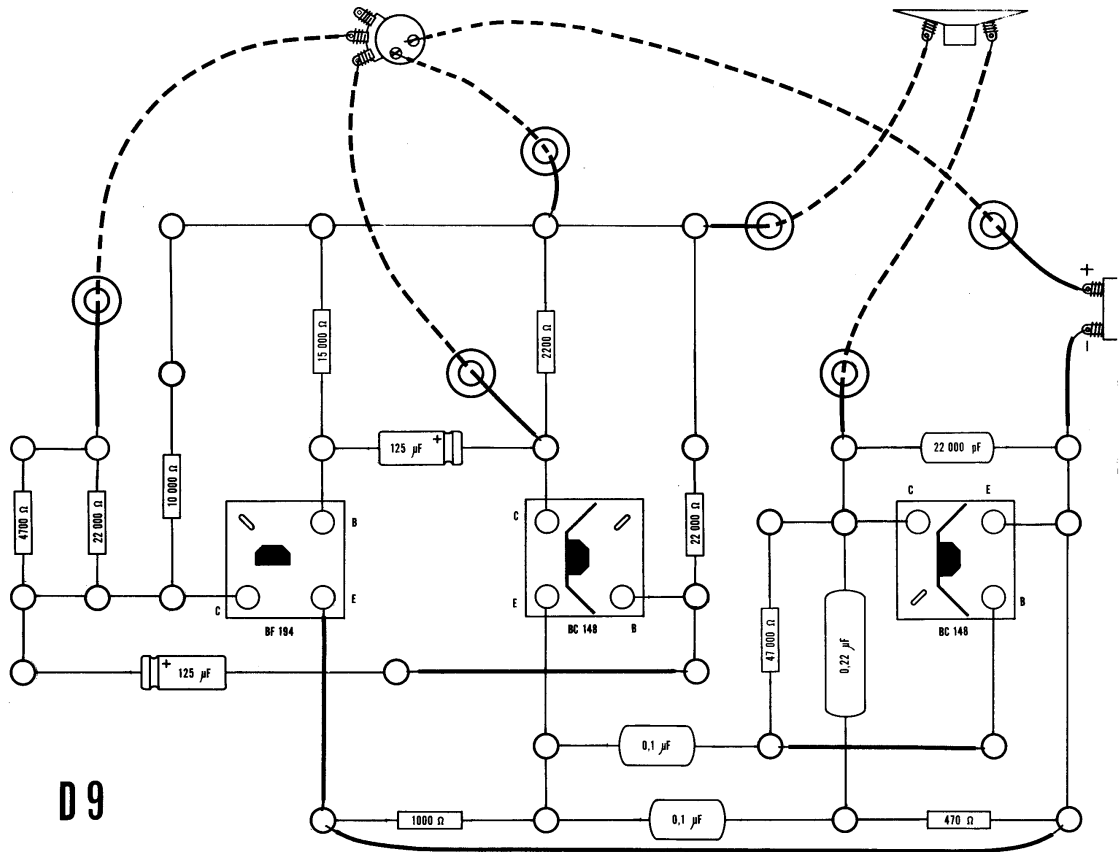




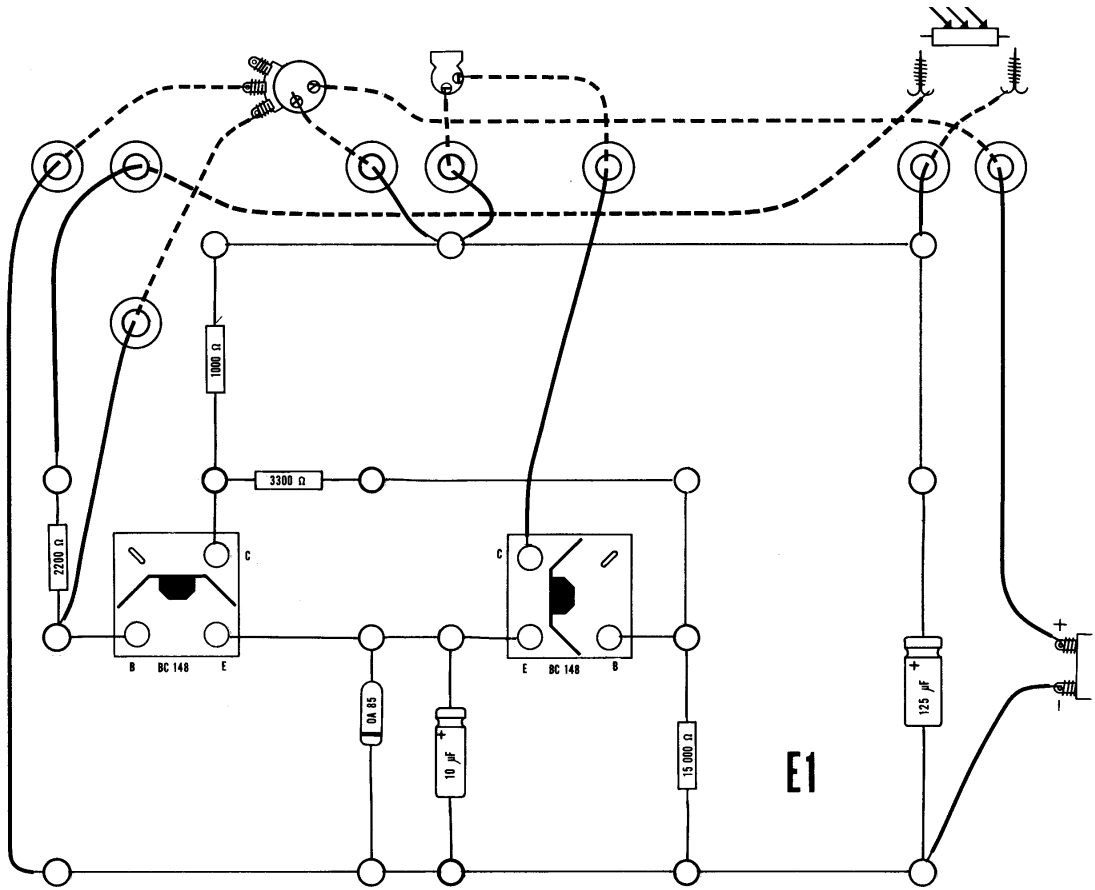


D7

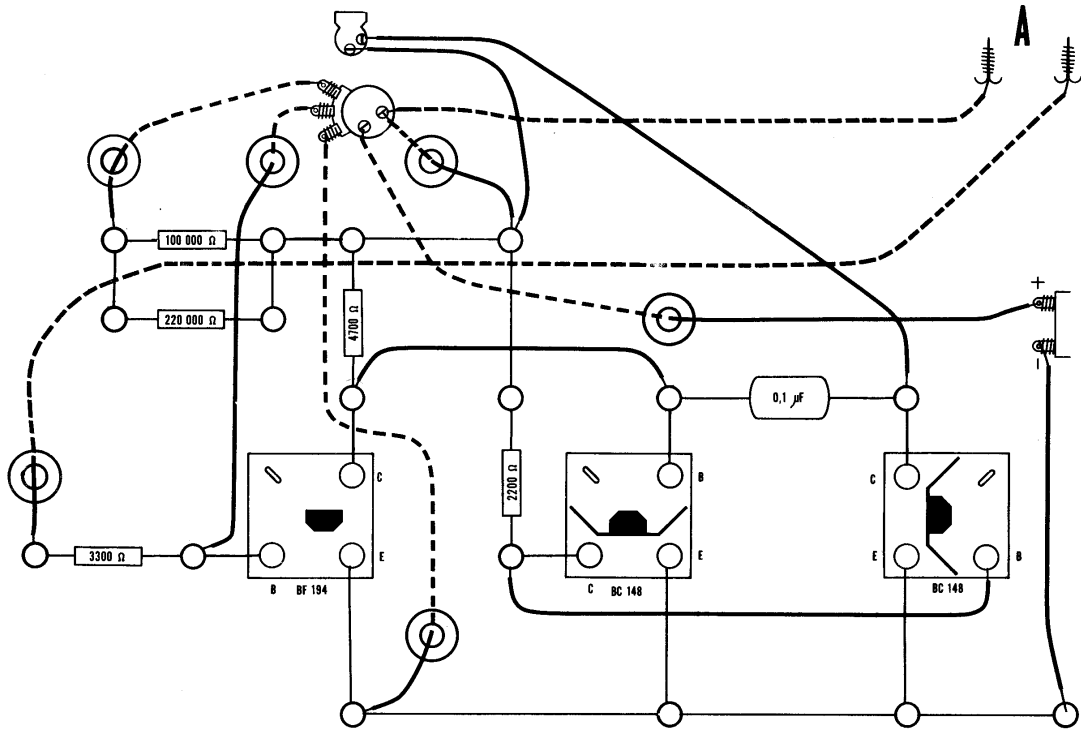




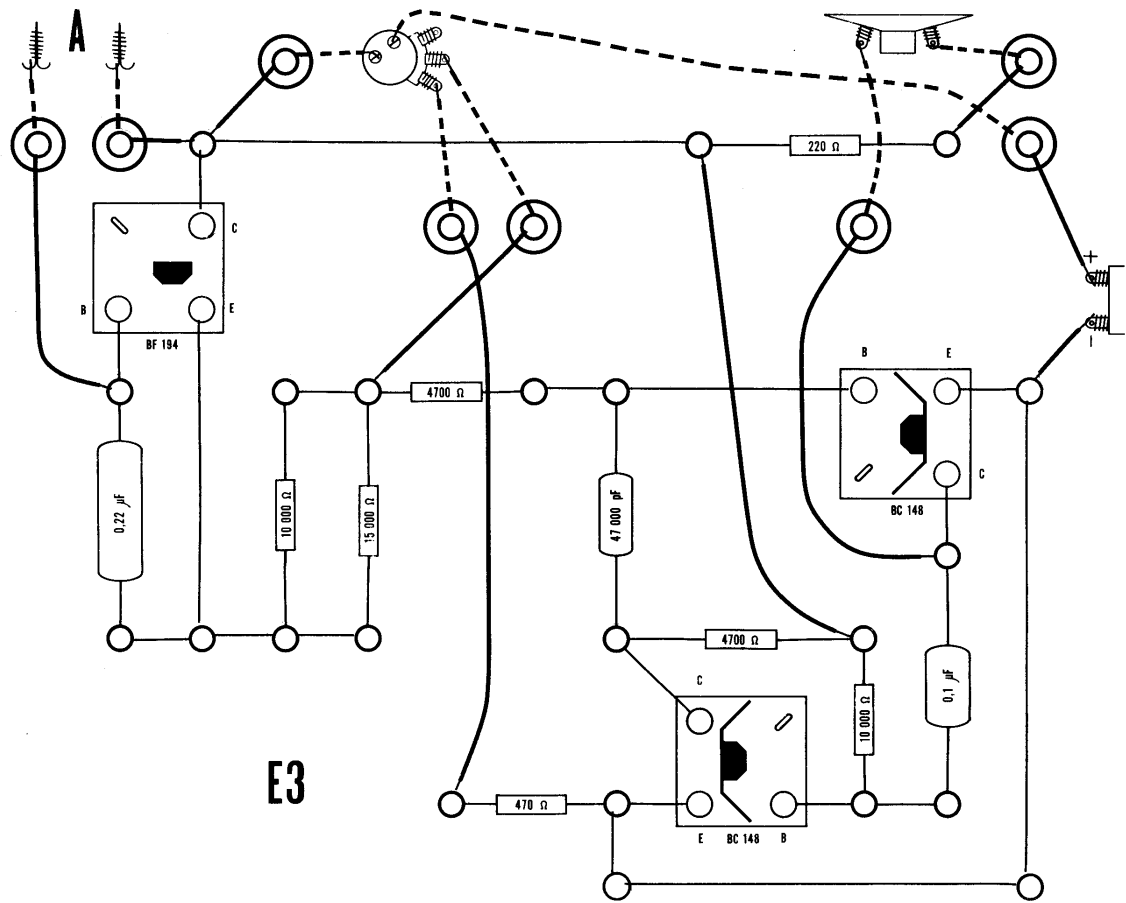
D9

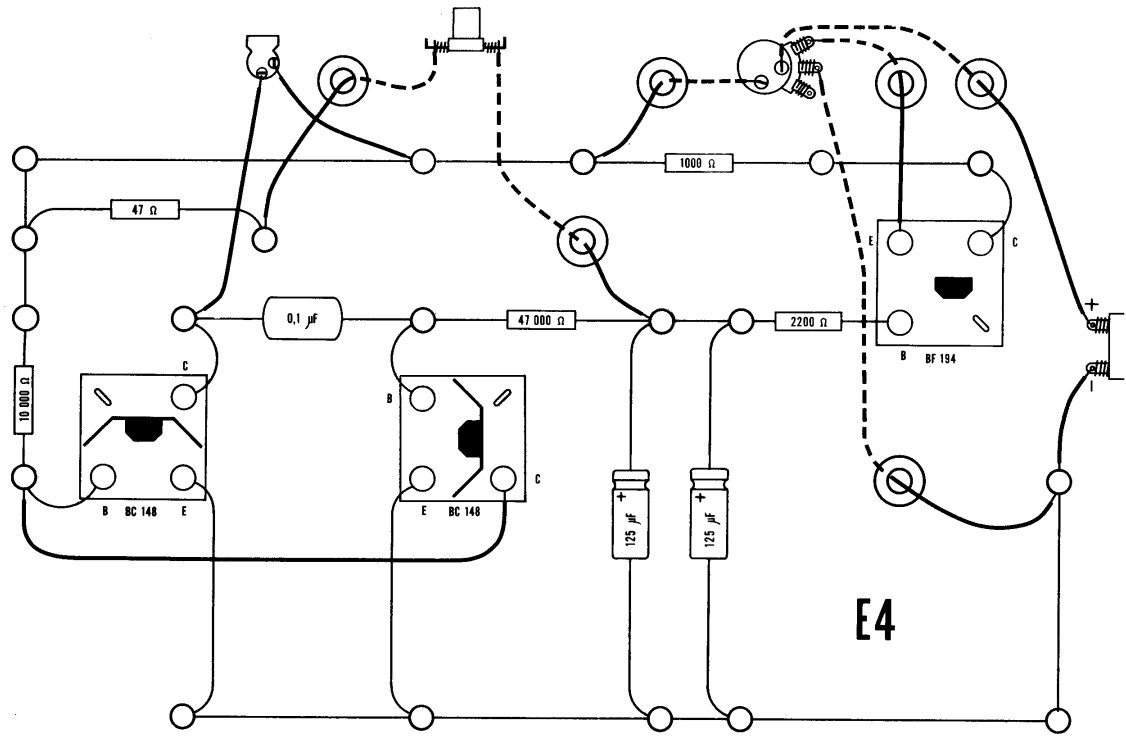


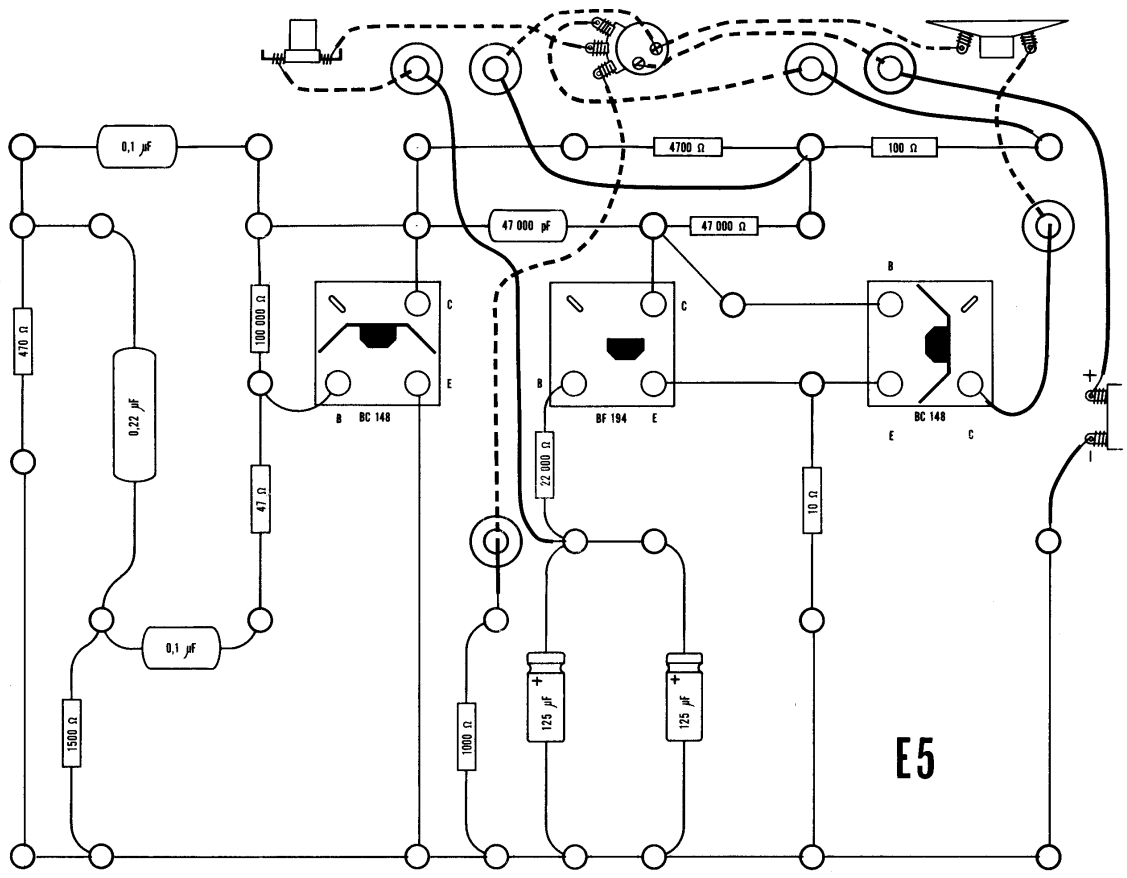
E1

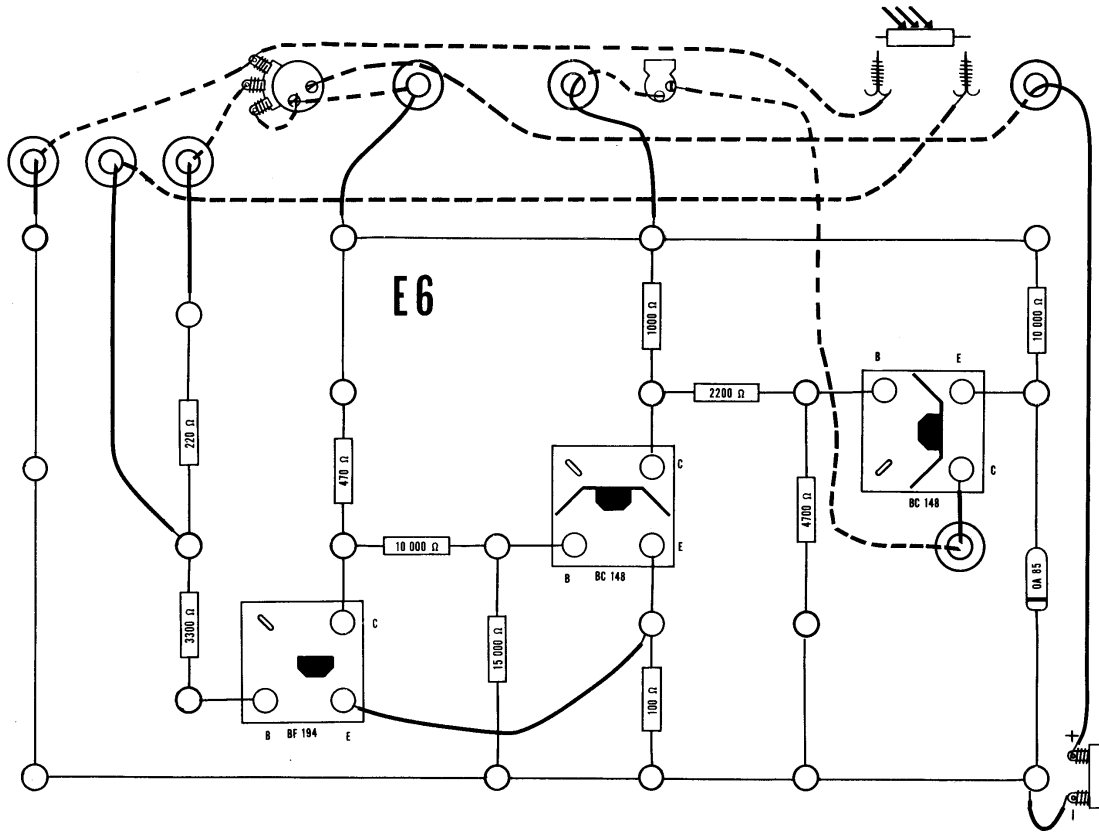


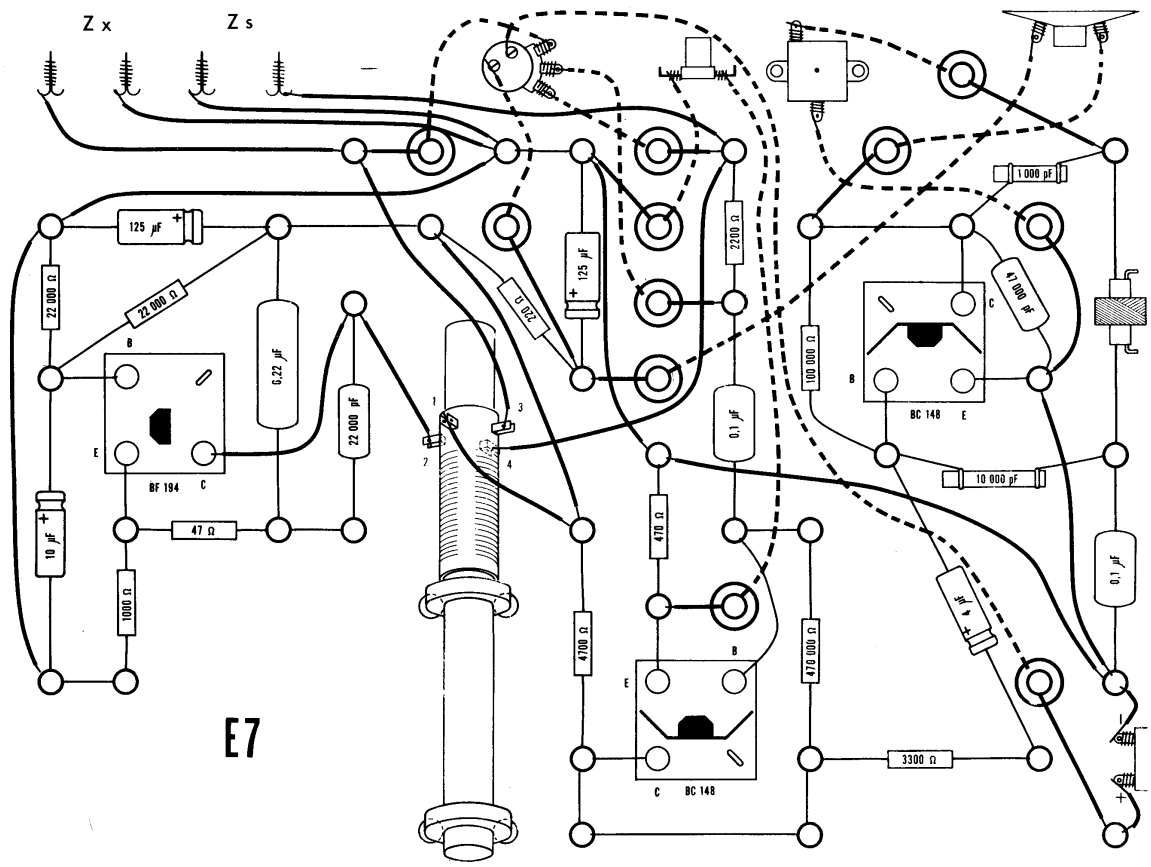
E2











E7